

Quiz, Review and Plant Hunt Answers

Rocks Multiple Choice

1. B - mountain
2. D - all of the above
3. B - igneous
4. A - quartz
5. B - Appalachian
6. B - lithification
7. B - planting trees
8. D - sandstone
9. B - the ocean
10. B - beach

A Garden of Knowledge

1. The ovule of a plant will eventually become a seed.
2. The two different types of roots are taproots which grow straight down, and fibrous roots which spread out.
3. Plants are very important because they release oxygen that humans and other animals need to breath.
4. Plants that produce cones instead of flowers are called conifers.
5. A fern starts out as a gametophyte. A plant that is both male and female.
6. The male part of a flower is moved by wind, water, bees, and animals. It is called pollen.
7. During pollination, the pollen sticks to the stigma of a flower. The stigma is attached to a long tube called a style.
8. The green substance in a plant's leaves is called chlorophyll.
9. Water and minerals move from up from a plant's roots through the stem.
10. Ferns have spores on the bottom of their leaves that are released into the wind instead of seeds.

Quiz, Review and Plant Hunt Answers

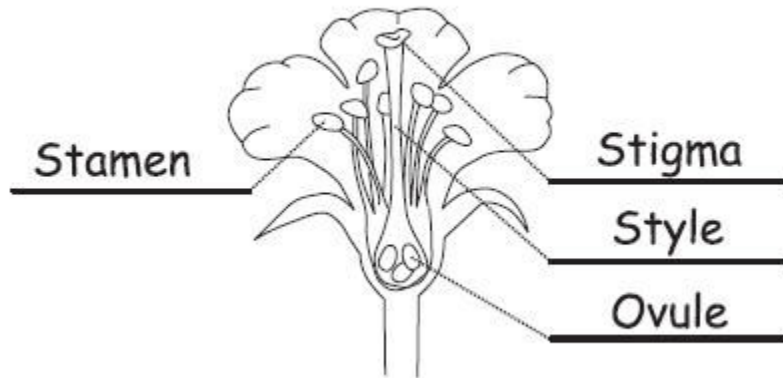
Cont'd

Plant Hunt

1. *Fothergilla gardenii* – Dwarf Fothergilla
2. *Cercis Canadensis* 'Forest Pansy' Eastern Redbud
3. *Ilex opaca* – American Holly
4. Labeled Ferns: 1) Autumn Fern 2) Christmas Fern 3) Cinnamon Fern 4) Japanese Painted Fern 5) Royal Fern 6) Tassel Fern 7) Boston Fern 8) Resurrection Fern
5. *Nyssa sylvatica* – Black Gum or Sour Gum
6. *Hydrangea quercifolia* – Oakleaf Hydrangea
7. *Viburnum carlesii* 'Cayuga" Korean Spice Viburnum
8. *Viburnum utile* – Eskimo Viburnum
9. *Celtis occidentalis* – Common Hackberry
10. *Cornus alternifolia* – Pagoda Dogwood
11. *Elaeagnus pungens* – Thorny Elaeagnus
12. *Taxodium distichum* – Common Bald Cypress
13. *Liquidambar styraciflua* – American Sweetgum
14. *Mahonia bealei* – Leatherleaf Mahonia
15. *Malus* sp. – Flowering Crabapple
16. *Rhododendron* sp. – Rhododendron or Azaleas
17. *Quercus prinus* – Chestnut Oak
18. *Paulownia tomentosa* – Princess Tree
19. *Buddleia davidii* – Butterfly Bush
20. *Yucca filamentosa* – Adam's Needle Yucca
21. *Amelanchier laevis* – Serviceberry
22. *Franklinia olatamaha* – Ben Franklin Tree
23. *Aesculus pavia* – Red Buckeye
24. *Hamamelis vernalis* – Vernal Witch Hazel
25. *Tsuga Canadensis* – Canadian Hemlock
26. *Acer rubrum* – Red Maple

Quiz, Review and Plant Hunt Answers Cont'd

Label the Parts of a Flower



Rock City History Review

Garnet Carter was born in Sweetwater, Tennessee in 1883. His wife was Frieda Carter. Garnet Carter invented Tom Thumb Golf, which was the world's first miniature golf course.

Frieda Carter used a ball of string to mark her winding pathway through Rock City. Rock City Gardens was opened to the public May 21, 1932.

Garnet Carter hired a man named Clark Byers to paint signs on barns along the roads advertising Rock City. He painted three words, most often they are SEE ROCK CITY !

**Since then millions of people have made their way to
Rock City Gardens.**